

# DATAMAR 2000 TIDE GAUGE STATIONS NETWORK

**INMARSAT Satellite Terminal  
Model 9502 BGAN**  
Optional for sites without  
GPRS / 3G coverage



**GEO-AtoN AIS Transmitter  
Aid to Navigation**

Type 1 (FATDMA)



**Model 3000CP (IP67)  
Data Acquisition and  
Transmission Unit**



With display and keyboard:  
Easy configuration and  
management

Internal Batteries: 2 x 9Ah



**RADAR-6115 Water Level Sensor**

Frequency: 26 GHz  
Measuring Range: 0-15m  
Accuracy: 2mm (1mm average)



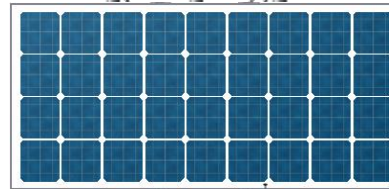
**Optional Meteorological Sensors:  
Wind Speed & Direction, Barometric  
Pressure, Temperature, Humidity, etc.**



**GEO-AtoN  
AIS Transmitter**

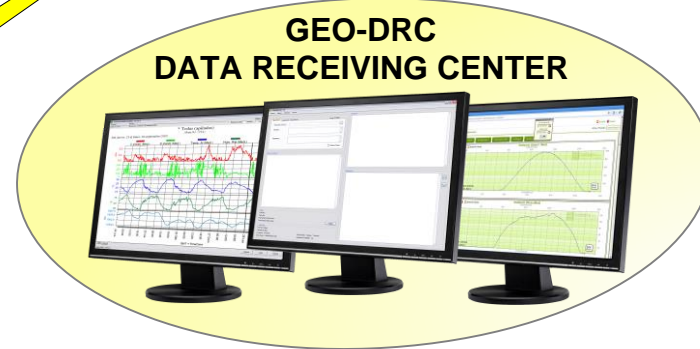
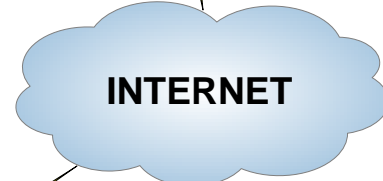
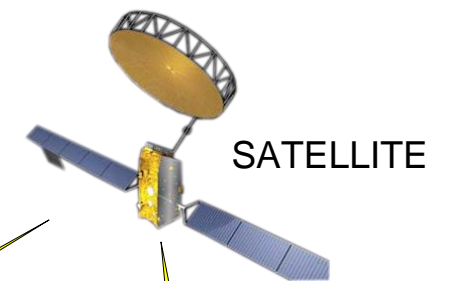


Solar Panel



**INMARSAT  
Communications**

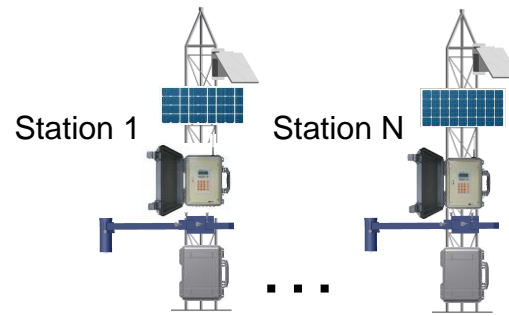
**GPRS / 3G  
Communications**



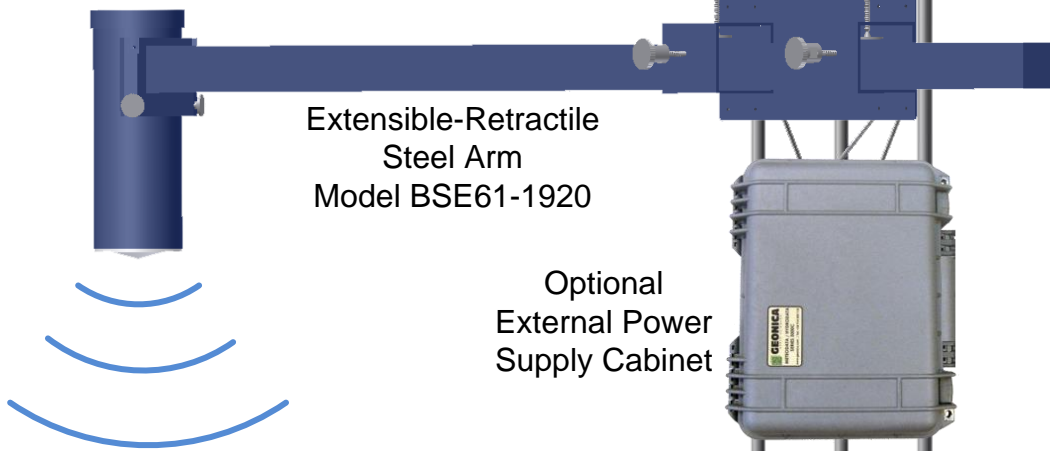
**GEO-DRC  
DATA RECEIVING CENTER**

**GEONICA SUITE 4K  
Management Software Package**

**WEBTRANS Ubiquitas  
Internet Platform**

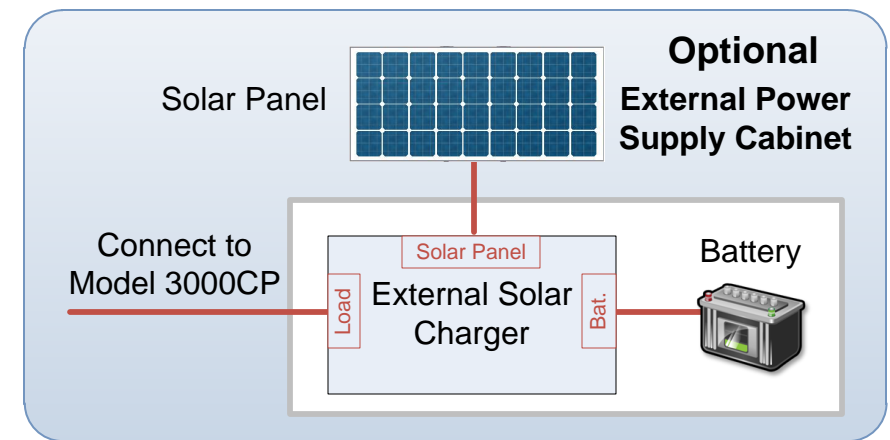


**Water Level Sensor  
Model RADAR-6115**



**Extensible-Retractile  
Steel Arm  
Model BSE61-1920**

**Optional  
External Power  
Supply Cabinet**



**EXTERNAL POWER SUPPLY SYSTEM DETAILS**



<b>GEONICA</b>		Edited:	TP		
		Date:	14/02/2019		
Description:	DATAMAR 2000 TIDE GAUGE STATIONS NETWORK		Code:	9785 0094	
Revision:	3	Approved:	MMR	Date:	14/02/2019